

VISTA 4120 Security System

ADEMCO

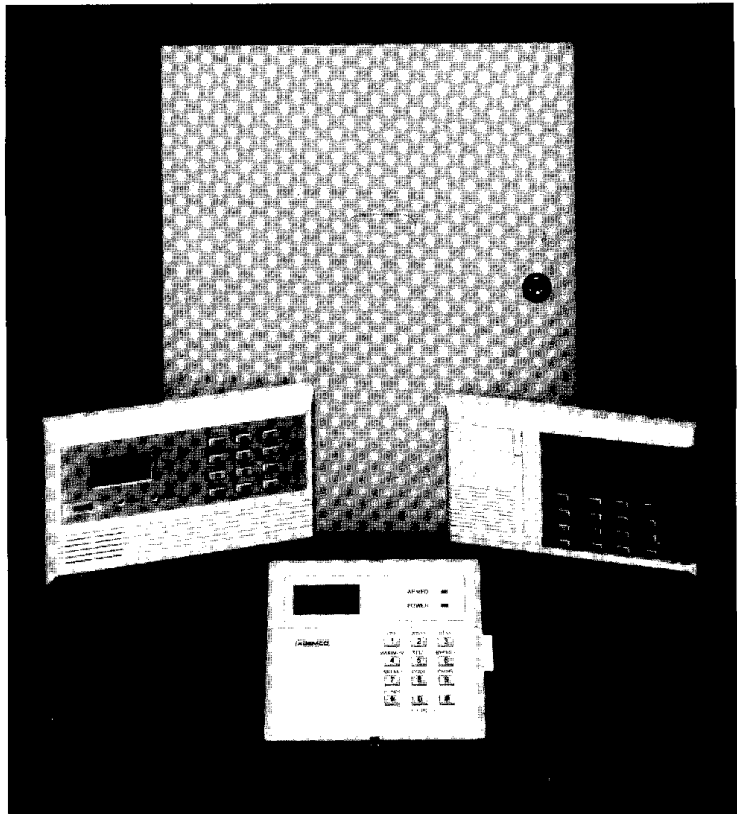
Economical VISTA control/communicator that complements the product line of highly featured VISTA XM controls. Ideal for use when the application requires a limited number of zones without need for hardwire or wireless zone expansion.

Zone Features:

- 8 programmable wired zones, 2 keypad zones, duress
- 1 of the zones can be supervised fire using two-wire smoke detectors
- Programmable for normally open or normally closed operation
- Normal response, 400 msec, on all zones, one zone can be 15 msec.
- Zone types: entry/exit, perimeter, interior follower, day trouble/night alarm, 24 hour silent panic, 24 hour audible panic, 24 hour auxiliary, fire
- Interior zone bypassed with STAY and INSTANT functions
- Zone restore — instant for alarm sounding and communications

Operation Features:

- All keypads have an English language display and a 4-wire connection to the control. Up to 8 keypads can be used depending upon model selected and other powered devices.
 - 4127 is low-cost keypad using a numeric zone LCD with fixed English status words, 20 mA current draw
 - 4137 keypad uses a numeric zone LCD with fixed English status words, backlit keys, 60 mA current draw
 - 5330 AlphaView keypad provides a custom English read-out of zone descriptions and status on a 2 line backlit LCD with 16 characters per line, backlit keys, 105mA current draw. A unique built-in user's manual greatly increases ease of use.
- Test mode checks sounder and generates communicator test report
- 8 user codes consisting of 1 installer code, 1 master code, and 6 secondary codes
- Installer code sends open/close signal
- Extra large cabinet with removable door for wiring ease



- Full VISTA compatibility—programming, downloading, and system operation are similar to other VISTA controls
- Swinger suppression — 15 is the maximum number of alarms and trouble reports permitted per armed period
- Individual bypass by zone
- Chime mode on entry/exit and perimeter zones
- Quick arming requires only a 2 digit entry for an arming mode, if enabled
- System powers up in previous state after total power failure (battery and AC)
- Interior zones bypassed with STAY and INSTANT arming.
- INSTANT mode cancels entry delay
- Two keypad activated panic zones
- Camlock included with cabinet
- Entry time: 0-255 seconds
- Exit time: 0-255 seconds
- Alarm cut-off time: 2-30 minutes

Output Features:

- Built-in alarm relay, SPST: steady output for burglary/audible emergency and pulsed for fire
- Pre-alarm, trouble, and alert sounder built-in into keypads
- Alarm current: 2.8 amps, 12VDC, circuit breaker protected

Communication Features:

- Touchtone or pulse dial
- Formats:
 - Ademco 4 + 2 Express: 10 characters/sec, DTMF (touchtone) data tones, 1400/2300 Hz ACK, 1400 Hz kissoff, checksum verification
 - Ademco Low Speed: 10 pulses/sec, 1900 Hz data tone, 1400 Hz ACK/kissoff
 - Radionics: 20 pulses per second, 1800 Hz data tone, 2300 Hz ACK/kissoff

- 3+1, 4+1, and 4+2 reporting
- Dual telephone numbers with format selectable by telephone number
- Back-up reporting: 8 attempts made to primary and another 8 attempts to secondary telephone number
- Expanded reporting: alarms, restorals, bypasses and troubles by zone; open/close by user
- Hexadecimal reporting
- 4-digit PABX code and two 12-digit telephone numbers
- True dial tone detection
- Double pole line seizure
- Cancel code sent if system is disarmed before alarm times-out
- Control low battery report when battery reaches 11.2 - 11.6 volts
- AC power loss report
- Communicator test report every 12, 24, or 168 hours

Electrical:

- Auxiliary current: 700mA, 12 VDC, circuit breaker protected
- Low battery shutdown: 10.2 - 10.6 volts
- Transformer: 16.5VAC, 25VA (Ademco 1321/TF2)
- Standby time: 5 hours with 400mA auxiliary load using a 12 volt, 4 Ah battery
- Battery charging voltage: 13.8VDC
- Alarm current: 2.8 amps, 12VDC

Agency Approvals:

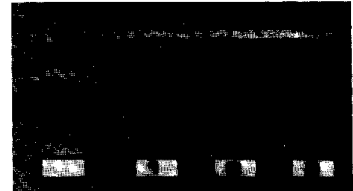
- UL household burglary (pending)
- UL household fire (pending)
- CSFM household fire (pending)

Programming:

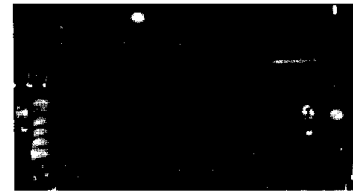
- Programmable through keypad using non-volatile EEROM memory
- Remote download and control from an IBM compatible PC
 - requirements: MS-DOS 3.1 or higher, Hayes 1200 Smartmodem, 4130PC V-Link Ademco software
- Downloading security with: security code handshake, hang-up and call-back, data encryption, operator access levels to files and functions, date/time stamping with operator ID
- Account takeover protection by locking out local keypad programming
- Remote download capabilities:
 - Arm in away mode
 - Disarm
 - Bypass individual zones
 - Change user codes
 - Enter new program
 - Shut down communications
 - Shut down all functions
 - Inhibit keypad programming
 - Upload resident control program
 - Read arming status
 - Read AC power status
 - Read list of faulted zones
 - Read list of bypassed zones
 - Read list of zones in alarm or trouble
- Built-in telephone answering machine defeat mode



Fixed English Display



Custom English Display



16-bit microprocessor maintains compatibility with VISTA XM series

How to Order:

4120EC — Control/Communicator; includes transformer, and cabinet with lock

4127 — Basic keypad; zone numeric LCD with fixed English status words, piezo sounder, 20mA current draw

4137 — Enhanced keypad; numeric LCD with fixed English status words, backlit keys, piezo sounder, 60mA current draw

5330 — AlphaView™ keypad; 2 line backlit LCD (16 characters per line) using custom English words for zone descriptions and status, built-in user's manual, backlit keys, piezo sounder, 105mA current draw

4130PC — V-Link™ downloading and remote control software

Order battery separately; 12V, 4Ah, gel lead acid type

ADEMCO

165 Eileen Way
Syosset, NY 11791

Copyright 1990

PITTMAN CORPORATION